

Bromley Health Scrutiny Sub-Committee Update

**Jonathan Lofthouse,
Site Chief Executive
(PRUH and South Sites)**

July 2022



PRUH and South Sites update

- Estates development: Current and upcoming projects
- Trust strategy highlights: Our BOLD vision

Estates development: Current & upcoming projects



NEW OPERATING THEATRE AT ORPINGTON HOSPITAL

A new state-of-the-art operating theatre has opened at Orpington Hospital, increasing our capacity to perform orthopaedic procedures and helping to reduce waiting times.

PRUH CAR PARK EXPANSION

Work began in June to build a new single storey parking deck for patients, visitors and staff. Patient parking will not be impacted by the construction work. We have opened an off-site temporary parking facility to support staff.



DAY SURGERY UNIT CONNECTING CORRIDOR

Work continues on a new permanent structure linking Day Surgery to the main hospital. This provides a more appropriate and pleasant experience for patients and greater clinical flexibility.



ENDOSCOPY UNIT

Purpose-built and state-of-the-art; this upgrade of our facilities at the PRUH will create a more pleasant environment for patients, enhancing their care and experience. Works due to begin this summer.



Trust strategy highlights: Our BOLD vision

In April, we published our Strong Roots, Global Reach strategy action plan for 2022/23. It prioritises 20 key projects we will focus on to make our aspirations a reality. We are making progress on the plan, which is built around four themes:

Brilliant People

People and Culture Plan

- Launched in June 2022, the plan aims to help our staff thrive in their careers at King's.
- It sets out how we will offer staff personal and professional development, enhanced well-being support, and how we will give staff a stronger voice.
- To coincide with the launch, we organised a 'Brilliant People Week', in which we spoke to staff about their roles and showcased just some of the outstanding work that our teams do.

Widening participation internship programme

- Beginning in September 2021, the programme supports young adults with special educational needs and disabilities (SEND) to gain work experience. First cohort graduates this summer.

Outstanding Care

Through upgrading our estate with projects like the new theatre at Orpington, we can improve the care and experience of patients.

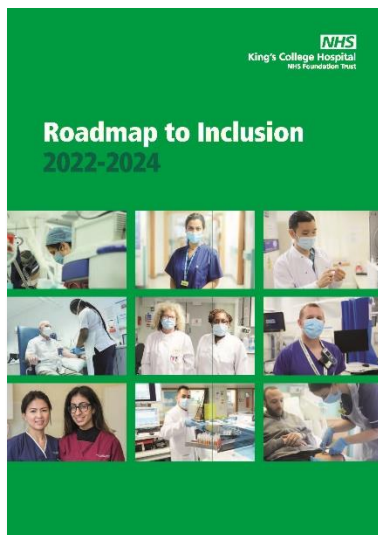


Trust strategy highlights: Our BOLD vision

Strong Roots, Global Reach strategy action plan for 2022/23. Progress on the four themes:

Leaders in Research, Innovation and Education

Launch of the SC1 District in June grows and embeds the Trust's innovation culture.



Diversity, Equality and Inclusion

Equality, Diversity and Inclusion (EDI) Roadmap to Inclusion

- Launched in May 2022 and designed to make King's a more inclusive place for patients, staff and local communities.
- Launch activity included information stall at the PRUH, discussions with staff and webinars.
- Site visits to Orpington Hospital, Beckenham Beacon and Queen Mary's Hospital Sidcup.
- Introduction to the Equalities Risk Assessment Framework (ERAF).